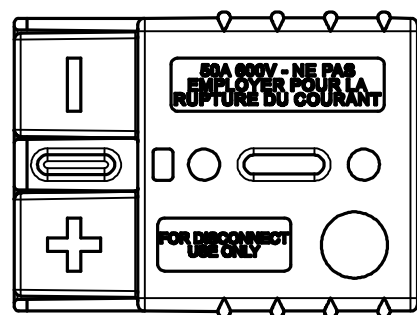
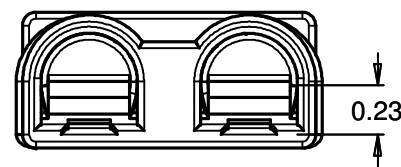
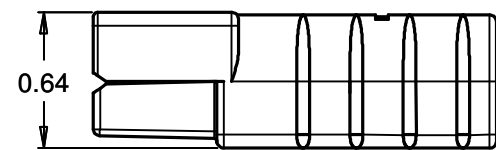


### HOUSING + 2 CONTACTS

Part #	Suggested voltage	Color	Wire size
SPC6-Y	12 VDC	YELLOW	6 AWG
SPC8-Y	12 VDC	YELLOW	8 AWG
SPC10/12-Y	12 VDC	YELLOW	10/12 AWG
SPC6-O	18 VDC	ORANGE	6 AWG
SPC8-O	18 VDC	ORANGE	8 AWG
SPC10/12-O	18 VDC	ORANGE	10/12 AWG
SPC6-R	24 VDC	RED	6 AWG
SPC8-R	24 VDC	RED	8 AWG
SPC10/12-R	24 VDC	RED	10/12 AWG
SPC6-GRA	36 VDC	GRAY	6 AWG
SPC8-GRA	36 VDC	GRAY	8 AWG
SPC10/12-GRA	36 VDC	GRAY	10/12 AWG
SPC6-BLU	48 VDC	BLUE	6 AWG
SPC8-BLU	48 VDC	BLUE	8 AWG
SPC10/12-BLU	48 VDC	BLUE	10/12 AWG
SPC6-GRN	72 VDC	GREEN	6 AWG
SPC8-GRN	72 VDC	GREEN	8 AWG
SPC10/12-GRN	72 VDC	GREEN	10/12 AWG
SPC6-BLK	80 VDC	BLACK	6 AWG
SPC8-BLK	80 VDC	BLACK	8 AWG
SPC10/12-BLK	80 VDC	BLACK	10/12 AWG

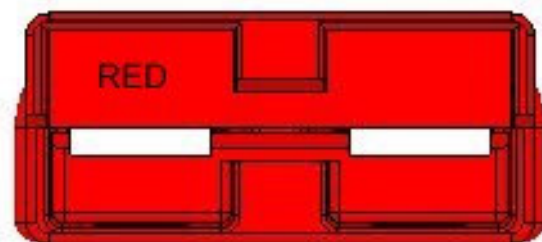
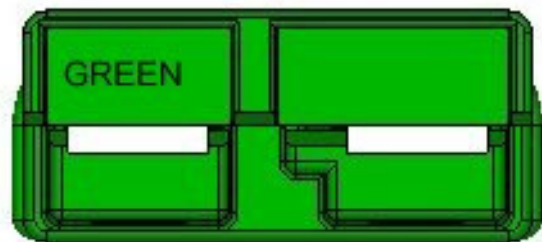
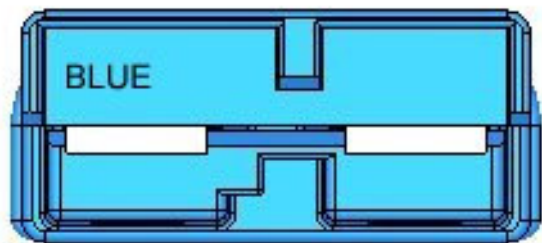
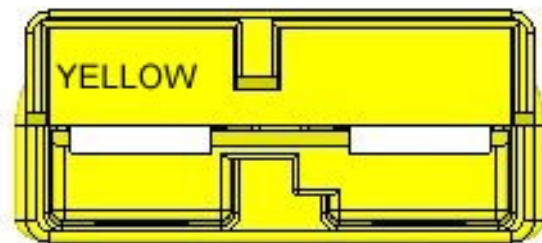
### HOUSING

Part #	Suggested voltage	Color
SPC-Y	12 VDC	YELLOW
SPC-O	18 VDC	ORANGE
SPC-R	24 VDC	RED
SPC-GRA	36 VDC	GRAY
SPC-BLU	48 VDC	BLUE
SPC-GRN	72 VDC	GREEN
SPC-BLK	80 VDC	BLACK



### CONTACTS

PART #	WIRE SIZE
SC5900	6 AWG
SC5952	8 AWG
SC5915	10/12 AWG



**THIS DOCUMENT CONTAINS CONFIDENTIAL AND PROPRIETARY INFORMATION, AND MAY NOT BE USED, COPIED OR DISCLOSED IN WHOLE OR IN PART FOR ANY PURPOSE INCLUDING DESIGN OR MANUFACTURE WITHOUT THE PRIOR WRITTEN CONSENT OF DOYLE MANUFACTURING INC.**

REVISION	DESCRIPTION	BY	DATE
DRAWN	DATE	<b>DOYLE SHAMROCK INDUSTRIES</b>	
D. WATERS	1/20/09	1440 HOLLOWAY ROAD HOLLAND, OHIO 43528	
TOLERANCE UNLESS SPECIFIED		QUALITY CERTIFIED	
.X = +/- .060		ISO/TS16949:2002	
.XXX = +/- .010			
.XX = +/- .030			
.XXXX = +/- .005			
CUSTOMER	PART NO.	PART NAME	
SHAMROCK	SEE CHART	50 Amp Battery Connector	
MATERIAL	SHRINKAGE	JOB #	SHT
POLYCARBONATE	PER VENDOR	2007-25	1
UL94V0	UNITS		OF
COLOR	INCHES		1
SEE CHART			