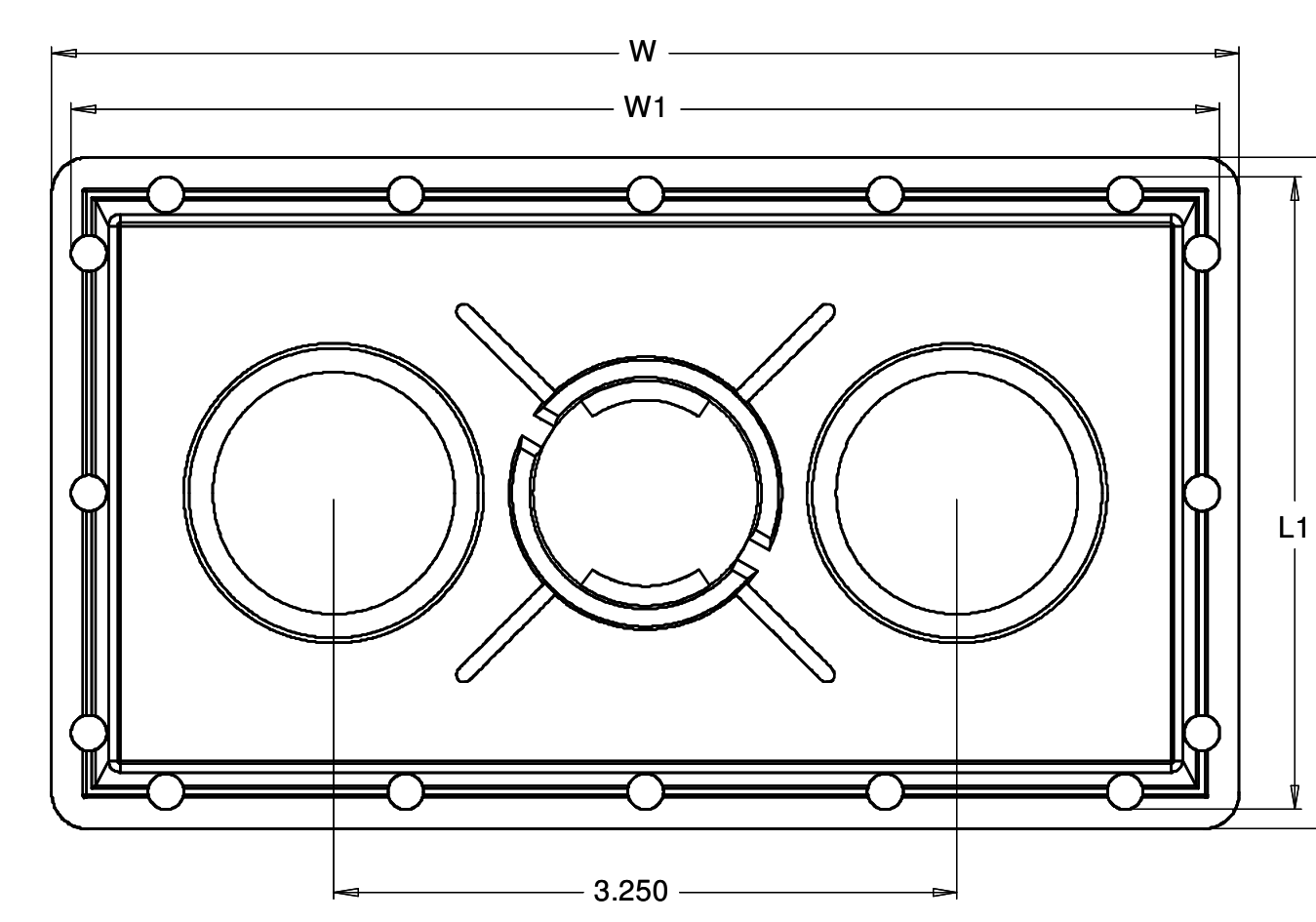
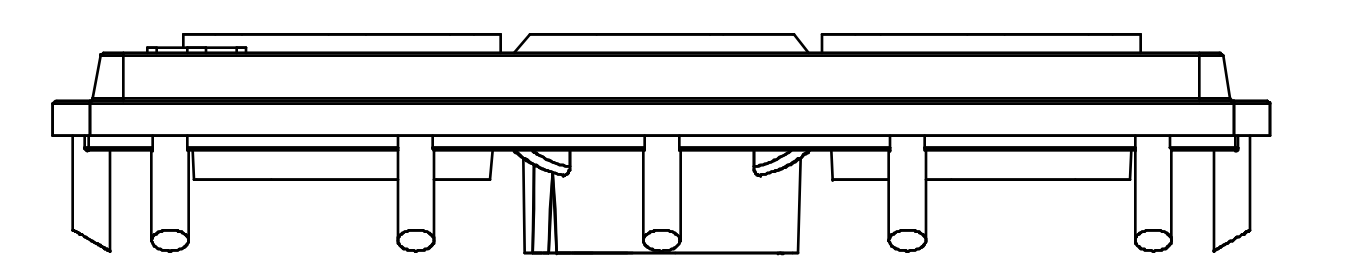
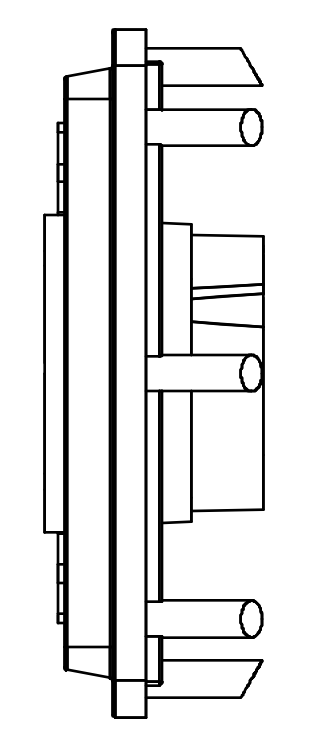
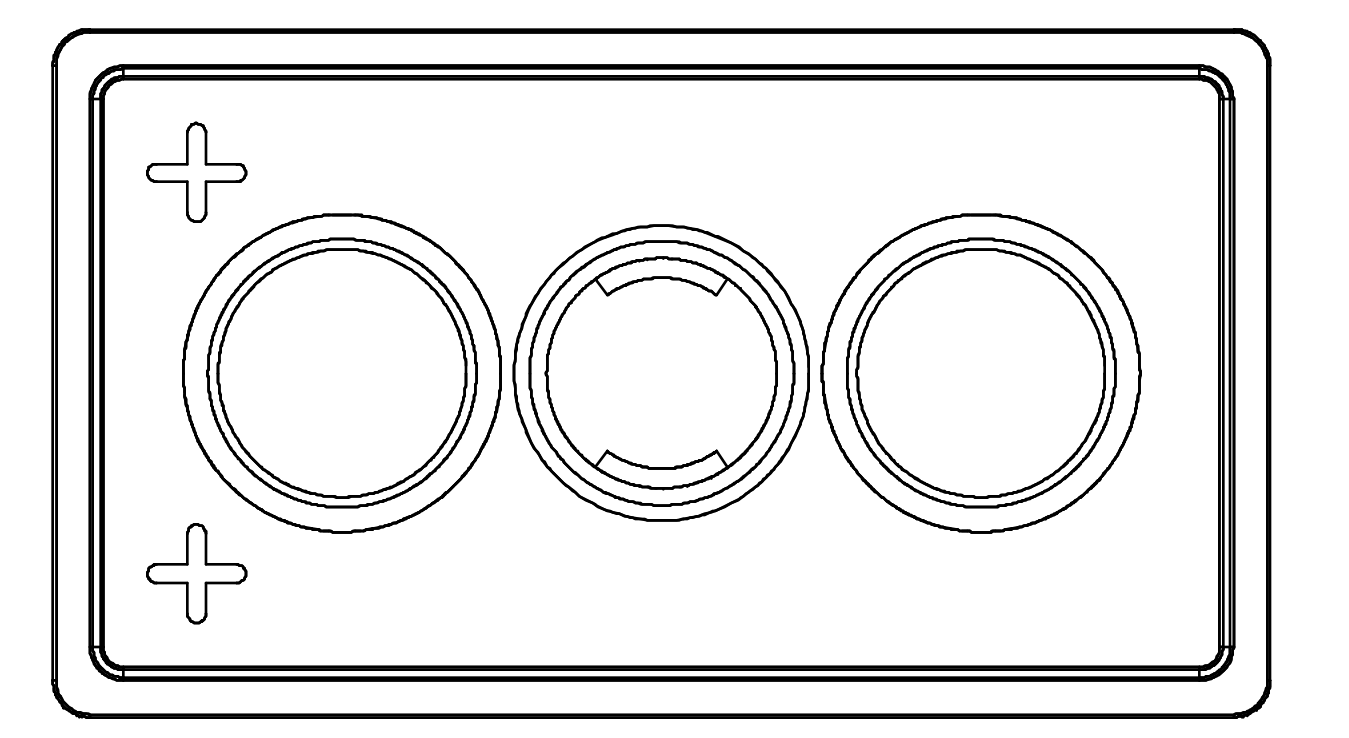


10 9 8 7 6 5 4 3 2 1



NARROW SERIES 2-POST  
BATTERY CELL COVERS

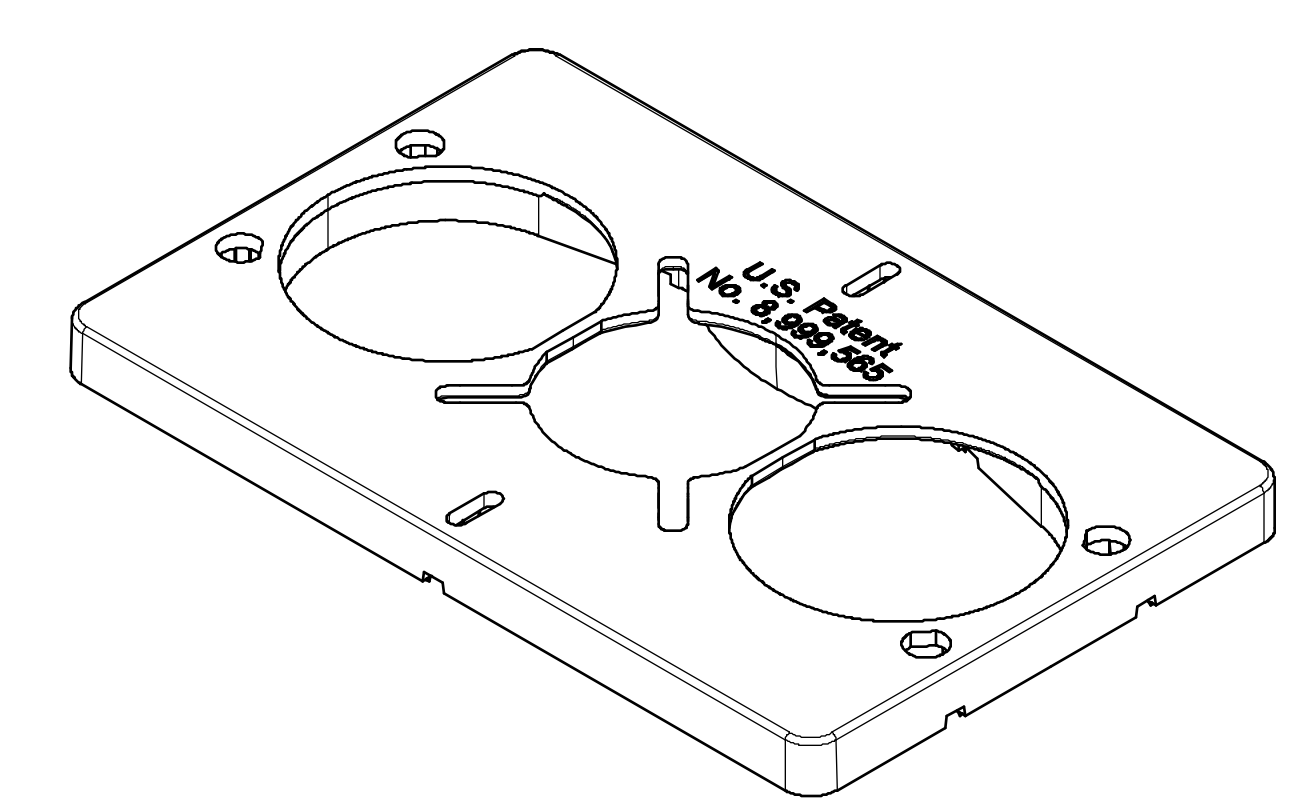
Plate Size	Dim. L	Dim. L1	Dim. W	Dim. W1
5	2.01	1.81	6.19	5.99
7	2.75	2.55	6.19	5.99
9	3.50	3.30	6.19	5.99
11	4.25	4.05	6.19	5.99
13	5.00	4.80	6.19	5.99
15	5.75	5.55	6.25	6.05

Part Number	Description
BCC5-BAY-FF	BatCellCovr5plt Float (all)
BCC5-BAY-L	BatCellCovr5plt Lead (all)
BCC5-BAY-LF	BatCellCovr5plt Lead Float
BCC5-BAY-WS-L	BatCellCovr5pltWtrSavr Lead
BCC5-BAY-WS-LF	BatCellCovWtrSavr5pltLeadFloat
BCC7-BAY-FF	BatCellCovr7plt Float (all)
BCC7-BAY-L	BatCellCovr7plt Lead (all)
BCC7-BAY-LF	BatCellCovr7plt Lead Float
BCC7-BAY-WS-L	BatCellCovr7pltWtrSavrLead
BCC7-BAY-WS-LF	BatCellCovWtrSavr7pltLeadFloat
BCC9-BAY-FF	BatCellCovr9plt Float (all)
BCC9-BAY-L	BatCellCovr9plt Lead (all)
BCC9-BAY-LF	BatCellCovr9plt Lead Float
BCC9-BAY-WS-L	BatCellCovr9pltWtrSavrLead
BCC9-BAY-WS-LF	BatCellCovWtrSavr9pltLeadFloat
BCC11-BAY-FF	BatCellCovr11plt Float (all)
BCC11-BAY-L	BatCellCovr11plt Lead (all)
BCC11-BAY-LF	BatCellCovr11plt LeadFloat
BCC11-BAY-WS-L	BatCellCovr11pltWtrSavrLead
BCC11-BAY-WS-LF	BatCellCovWtrSavr11plLeadFloat
BCC13-BAY-FF	BatCellCovr13plt Float (all)
BCC13-BAY-L	BatCellCovr13plt Lead (all)
BCC13-BAY-LF	BatCellCovr13plt Lead Float
BCC13-BAY-WS-L	BatCellCovr13pltWtrSavr Lead
BCC13-BAY-WS-LF	BatCellCovWtrSavr13plLeadFloat
BCC15-BAY-FF	BatCellCovr15plt Float (all)
BCC15-BAY-L	BatCellCovr15plt Lead (all)
BCC15-BAY-LF	BatCellCovr15plt Lead Float
BCC15-BAY-WS-L	BatCellCovr15pltWtrSavrLead
BCC15-BAY-WS-LF	BatCellCovWtrSavr15plLeadFloat

\* MORE STANDARD OPTIONS ARE AVAILABLE.  
CALL 1-419-865-8441 TO INQUIRE.

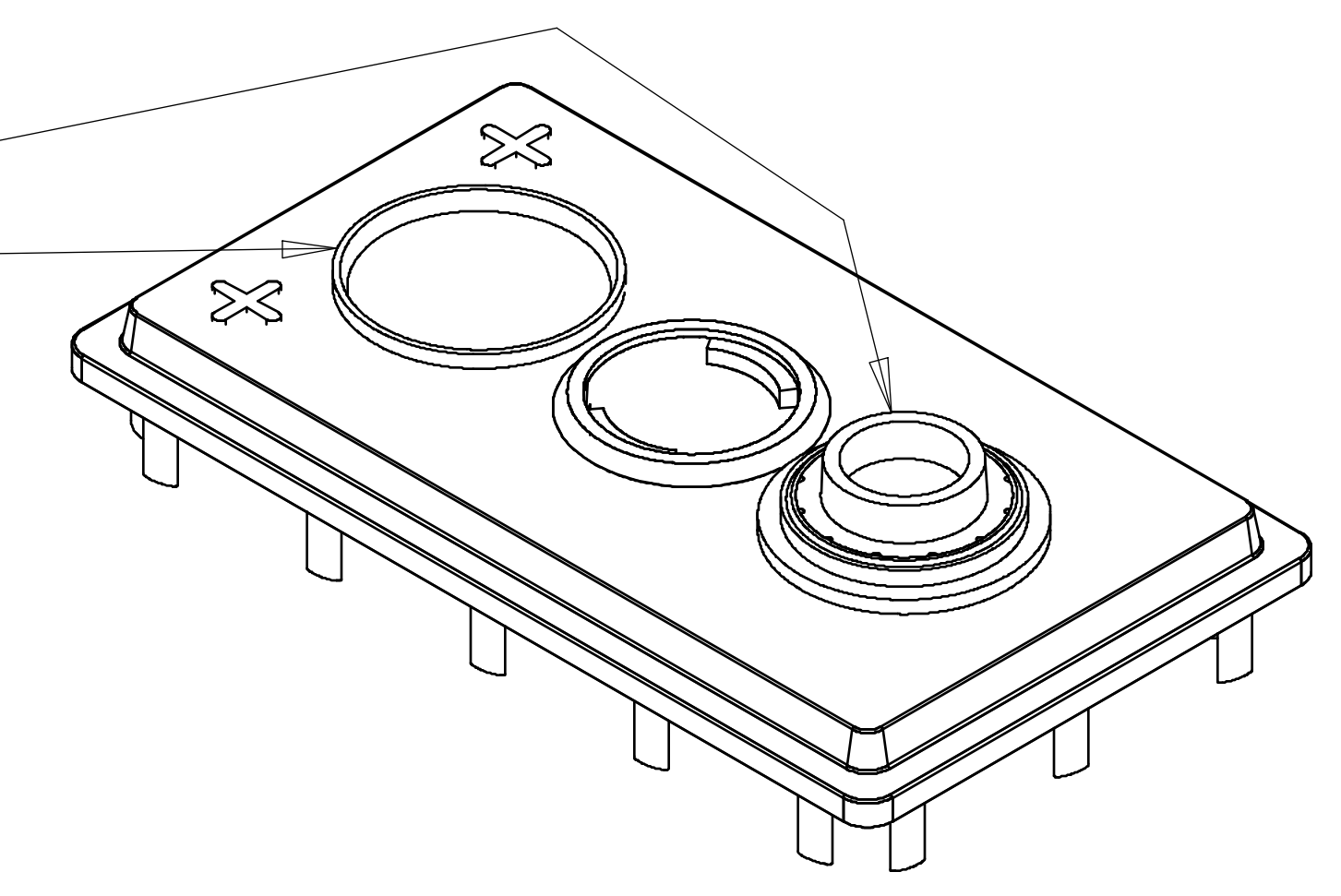
**OPTIONAL MOLDED-IN FLIP-CAP HINGE**

**SECTION A-A**



OPTIONAL WATER-SAVER INSERT

- NOTE- THE FOLLOWING OPTIONS ARE AVAILABLE FOR ALL TERMINAL POSITIONS:
- 1) MOLDED-IN LEAD BUSHINGS (SHOWN HERE)
  - 2) FLOATING LEAD BUSHINGS (SHOWN HERE)
  - 3) FLOATING RUBBER BUSHINGS (SHOWN ABOVE)



THIS DOCUMENT CONTAINS CONFIDENTIAL AND PROPRIETARY INFORMATION, AND MAY NOT BE USED, COPIED OR DISCLOSED IN WHOLE OR IN PART FOR ANY PURPOSE INCLUDING DESIGN OR MANUFACTURE WITHOUT THE PRIOR WRITTEN CONSENT OF DOYLE MANUFACTURING INC.

REVISION	DESCRIPTION	BY	DATE

DRAWN D. WATERS	DATE 2/28/05	<b>DOYLE MANUFACTURING INC.</b> MAKING PLASTIC MOLDS SINCE 1975.	
TOLERANCE UNLESS SPECIFIED +10/-05		1440 HOLLOWAY ROAD HOLLAND, OHIO 43528	QUALITY CERTIFIED ISO/TS16949:2002
CUSTOMER SHAMROCK	PART NO. SEE CHART	PART NAME NARROW SERIES 2-POST BATTERY CELL COVER	
MATERIAL PP	SHRINKAGE	JOB #	SHT 1
COLOR BLACK	UNITS INCHES	<b>01-96</b> OF 1	

10 9 8 7 6 5 4 3 2 1