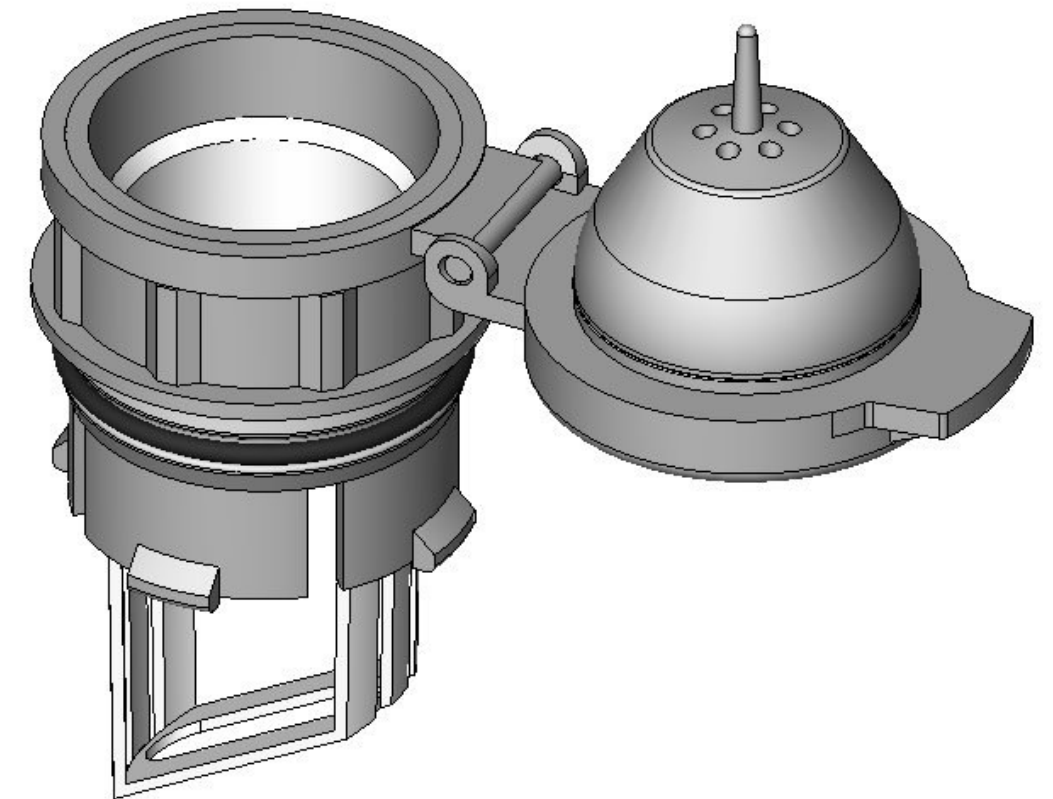


Section A-A



THIS DOCUMENT CONTAINS CONFIDENTIAL AND PROPRIETARY INFORMATION, AND MAY NOT BE USED, COPIED OR DISCLOSED IN WHOLE OR IN PART FOR ANY PURPOSE INCLUDING DESIGN OR MANUFACTURE WITHOUT THE PRIOR WRITTEN CONSENT OF DOYLE MANUFACTURING INC.

REVISION	DESCRIPTION		BY	DATE

DRAWN	DATE	DOYLE MANUFACTURING INC.	
D. WATERS		MAKING PLASTIC MOLDS SINCE 1975.	
TOLERANCE UNLESS SPECIFIED		1440 HOLLOWAY ROAD	QUALITY CERTIFIED
.X = +/- .060	.XXX = +/- .010	HOLLAND, OHIO 43528	ISO/TS16949:2002
.XX = +/- .030	.XXXX = +/- .005		
CUSTOMER	PART NO.	PART NAME	
SHAMROCK	2075	PUSH-IN ECONO-FLIP BATTERY VENT CAP	
MATERIAL	SHRINKAGE	JOB #	SHT
PP			1
COLOR	UNITS		OF
	INCHES		1